
5. How to disassemble

* CAUTIONS

1. To avoid damage to the product, follow the disassembly method in the Service Manual.
2. As some Semiconductor devices are very sensitive to static, ensure that all procedures are adhered to when handling ESD's.

1. Separate CABINET-TOP

A. Lay down MAIN-SET.

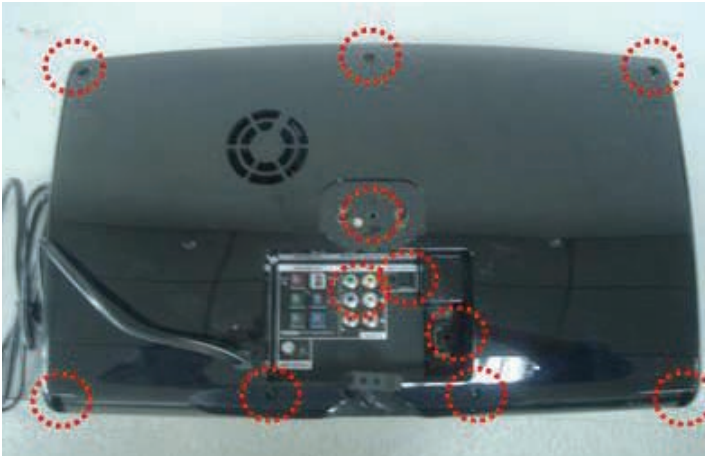
B. Rotate STAND 20 degree to separate from MAIN-SET.



2. Separate REAR-COVER

A. Unfasten 11 screw.

B. Lift up COVER to the direction of arrow. And separate power cord.



3. Separate CHASSIS-BACK

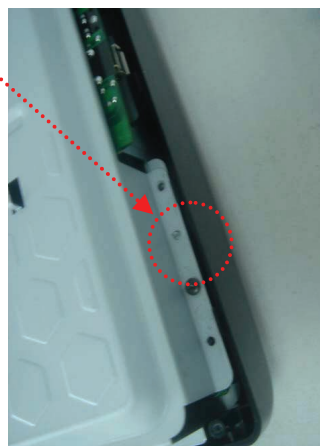
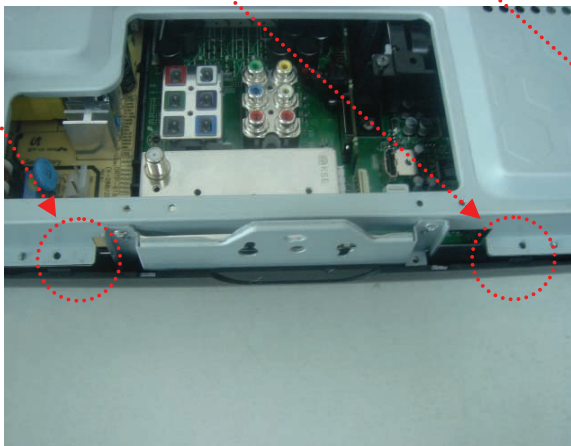
A. Separate 2 connector-wire.



B. Separate PCB-wire.



C. Unfasten 4 SCREW. (arrow-remark)



D. Separate MAIN-SET.



4. Separate PCB

A. Unfasten 2 SCREW to separate COVER-CHASSIS.



A. Unfasten 2 SCREW to separate COVER-CHASSIS.

